

STOPPLE® Plus Fittings

Sizes: 4- to 20-inches



T. D. Williamson, Inc.

Bulletin No: 1100.002.00

Date: November 2002

Cross Indexing No: n/a

Supersedes: n/a



■ STOPPLE® Plus Fitting

Description

STOPPLE® Plus fittings are full-branch split tees designed for use with TDW plugging machines. The design has undergone extensive pressure and functional testing. STOPPLE Plus fittings are furnished with LOCK-O-RING® Plus flanges drilled and faced to match ASME Class 150, 300 or 600 flanges in sizes 4- through 20-inches.

STOPPLE Plus fittings are an alternative to conventional TDW STOPPLE fittings and are designed to ASME B31.4 and B31.8 requirements. (See chart for MAOP.)

- There are no side openings in the flange, which eliminates leak paths.
- Interlock system provides positive indication LOCK-O-RING Plus plug leaves are fully expanded.
- Complete installation and retrieval of LOCK-O-RING Plus plug is done from tapping machine, thereby eliminating costly trips from tapping machine to fitting.

Note: The STOPPLE Plus Fitting is available exclusively through TDW Services, Inc. Call 1-800-828-1988 for more information.

Features

STOPPLE Plus fittings are manufactured with a controlled carbon equivalent of .45 or lower. Factory welding of TDW STOPPLE Plus fittings is 100 percent radiographically inspected. Fitting sleeves are an extruded or fabricated type design, manufactured from a pressure-vessel quality, normalized, killed carbon steel plate with a hardness of Rc22 or lower.

LOCK-O-RING Plus plugs are retained in the STOPPLE Plus fittings by means of retaining leaves, mounted on the plug, that are extended into a mating groove in the flange of the fitting.



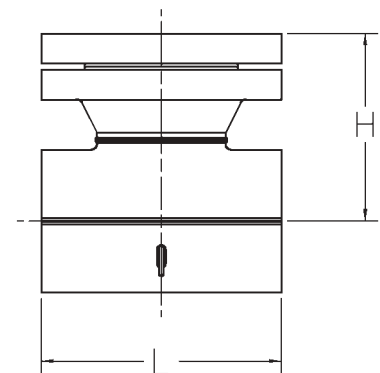
■ LOCK-O-RING® Plus Plug

Options

Standard STOPPLE Plus fittings are furnished in a kit featuring LOCK-O-RING Plus flange with raised face; matching blind flange, studs, nuts and a stainless steel spiral wound gasket; LOCK-O-RING Plus plug with Buna-N O-ring; scarfed nipple for the LOCK-O-RING Plus plug to replace coupon cut from pipeline; and tile red primer coating.

Options include:

- Neoprene, Viton or EPDM O-rings
- LOCK-O-RING Plus flange with ring type joint facing
- Backup strips for the longitudinal weld joint of the fitting.
- Reduced branch variations can be ordered.



ISO 9001 Certified

**Toll Free
1-800-828-1988**



Class 150 STOPPLE® Plus Fitting	Inches	DN	Lbs.	Kg.	Part Number	L (Inches)	H (Inches)	MAOP in PSI Per ASME B31.8 At -20 to +100°F			
								0.72 DF	0.6 DF	0.5 DF	0.4 DF
	4	100	85	39	26-0940-0415-KT	10.750	7.750	285	285	285	285
	6	150	135	61	26-0940-0615-KT	14.000	9.250	285	285	285	285
	8	200	210	95	26-0940-0815-KT	16.500	11.000	285	285	285	285
	10	250	350	159	26-0940-1015-KT	20.000	12.625	285	285	285	285
	12	300	525	238	26-0940-1215-KT	22.000	14.375	285	285	285	285
	14	350	680	308	26-0940-1415-KT	26.000	15.500	285	285	285	285
	16	400	930	422	26-0940-1615-KT	30.000	16.250	285	275	230	185
	18	450	1275	578	26-0940-1815-KT	33.000	18.250	285	285	285	285
	20	500	1650	748	26-0940-2015-KT	36.000	19.750	285	285	285	285

Class 300 STOPPLE® Plus Fitting	Inches	DN	Lbs.	Kg.	Part Number	L (Inches)	H (Inches)	MAOP in PSI Per ASME B31.8 At -20 to +100°F			
								0.72 DF	0.6 DF	0.5 DF	0.4 DF
	4	100	105	48	26-0940-0430-KT	10.750	8.625	740	740	740	740
	6	150	170	77	26-0940-0630-KT	14.000	10.000	740	740	740	740
	8	200	255	116	26-0940-0830-KT	16.500	11.500	740	710	590	475
	10	250	420	191	26-0940-1030-KT	20.000	13.375	740	705	585	470
	12	300	630	286	26-0940-1230-KT	22.000	15.125	740	655	545	435
	14	350	825	374	26-0940-1430-KT	26.000	16.250	740	740	740	600
	16	400	1115	506	26-0940-1630-KT	30.000	17.125	740	630	525	420
	18	450	1485	674	26-0940-1830-KT	33.000	19.125	740	740	685	550
	20	500	1925	873	26-0940-2030-KT	36.000	20.500	740	740	630	505

Class 600 STOPPLE® Plus Fitting	Inches	DN	Lbs.	Kg.	Part Number	L (Inches)	H (Inches)	MAOP in PSI Per ASME B31.8 At -20 to +100°F			
								0.72 DF	0.6 DF	0.5 DF	0.4 DF
	4	100	130	59	26-0940-0460-KT	10.750	9.250	1480	1480	1480	1455
	6	150	245	111	26-0940-0660-KT	14.000	11.375	1480	1480	1295	1035
	8	200	375	170	26-0940-0860-KT	16.500	13.375	1480	1235	1030	825
	10	250	650	295	26-0940-1060-KT	20.000	15.875	1480	1305	1085	870
	12	300	860	390	26-0940-1260-KT	22.000	16.875	1480	1260	1050	840
	14	350	1120	508	26-0940-1460-KT	26.000	17.750	1480	1230	1025	820
	16	400	1610	730	26-0940-1660-KT	30.000	21.000	1480	1285	1070	855
	18	450	1950	885	26-0940-1860-KT	33.000	21.375	1480	1300	1085	865
	20	500	2580	1170	26-0940-2060-KT	36.000	23.250	1480	1325	1105	885

MAOP in PSI Per ASME B31.4 at
-20 to +180°F

Class 150 lb	285
Class 300 lb.	740
Class 600 lb.	1480